



Indianapolis 2006



# Best Practices

Midwestern Pavement Preservation  
Partnership Conference  
February 1-3, 2006

Saskatchewan

Highways and  
Transportation



# Seven Annual Steps

---

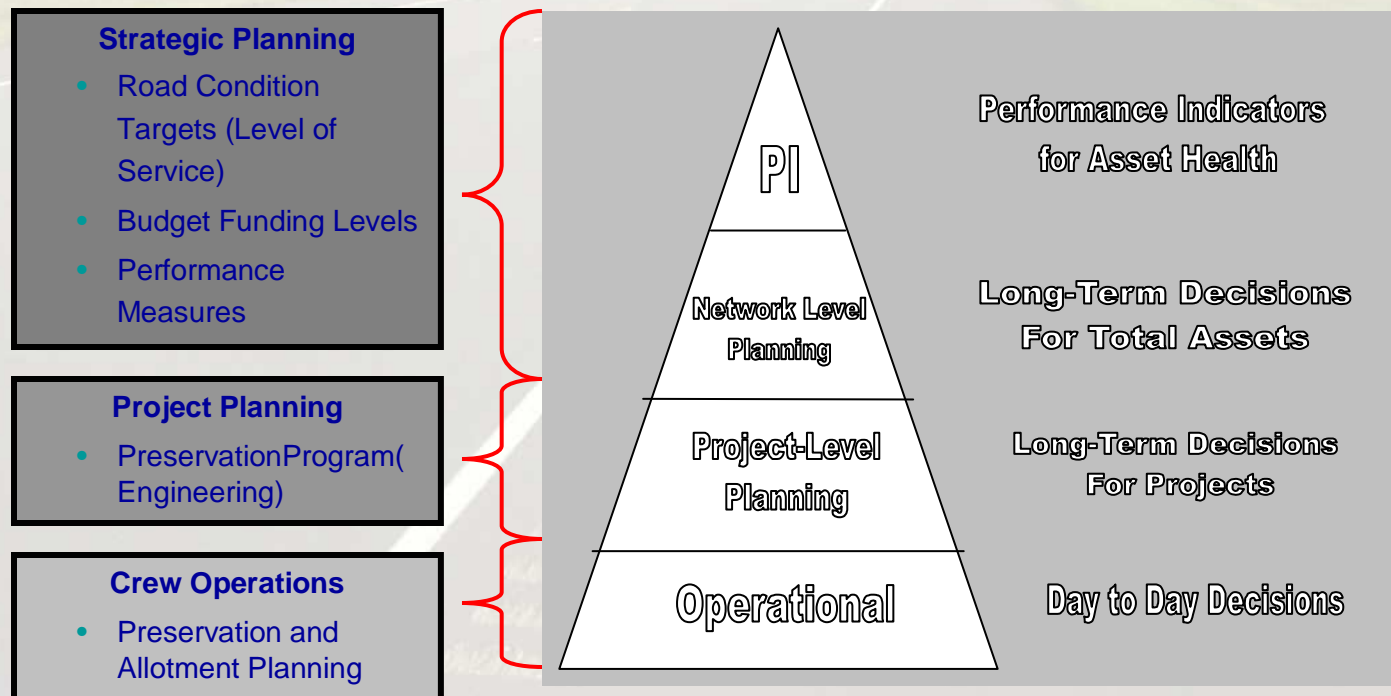
---

1. Data Collection
2. Model Development
3. Network Level Scenarios
4. Funding Request & Executive Direction
5. Project Level Planning
6. Maintenance Management
7. Performance Measures

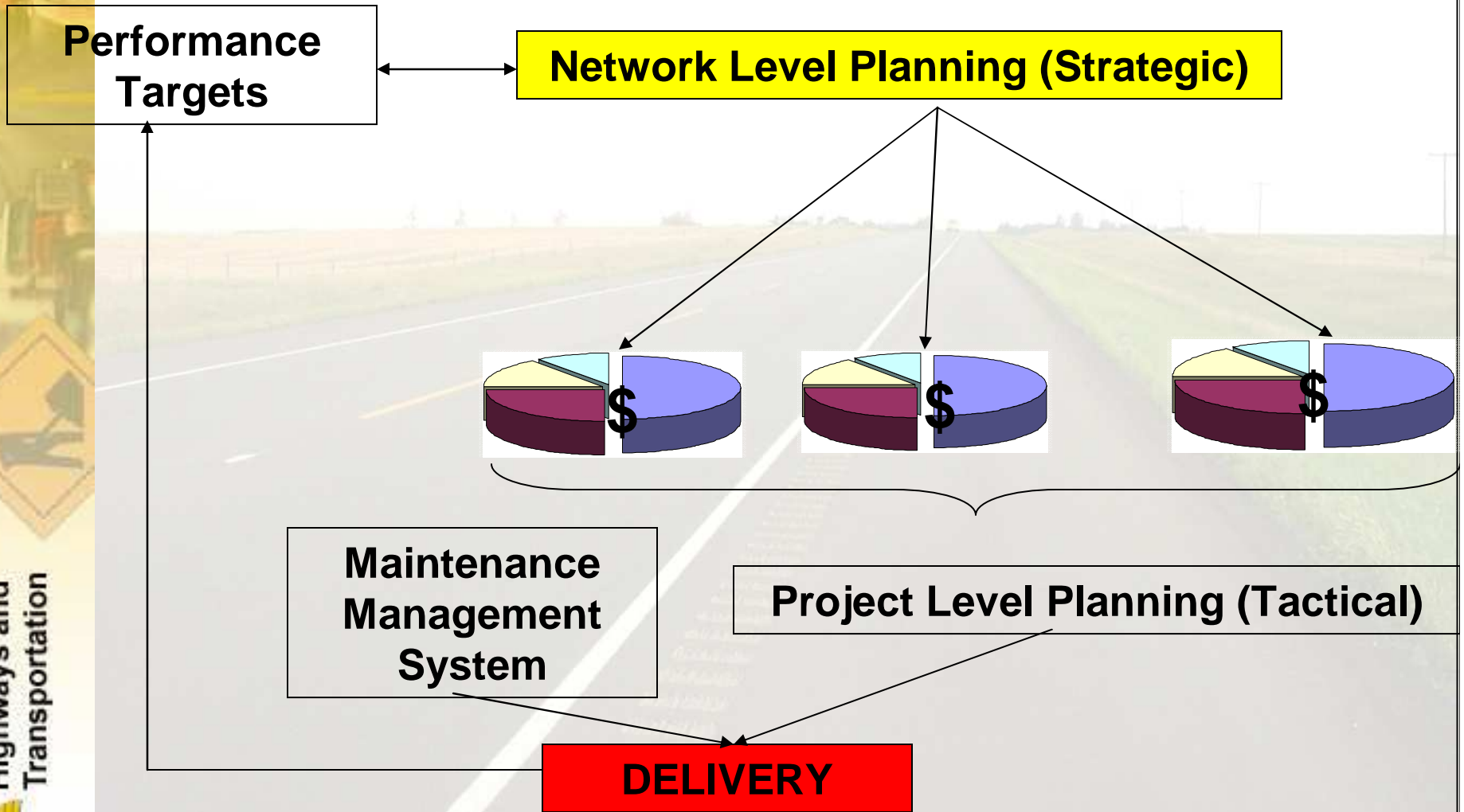


# Asset Management

- Network Level, Project Level and Day to Day decisions



# Asset Management



## 6. Maintenance Management System

- MMS is a method of managing maintenance at the Operational Level by:

- PLANNING
- ORGANIZING
- SCHEDULING
- REVIEW
- EVALUATE

**Routine Treatment Guidelines - AC & GRANS**

CS	Rut	IRI	Crack	Spot Seal 3120	Strip Seal 3125	Deep Patch 3130	Machine Patch 3140	Crack Seal / Filling 3150	Sandvik Blading & Planing 3200	Micro-Patch 3222	Thermo-Patch 3227	Spot Improvement 3280	Hand Patching 3190	Shoulder Work 3210
1	G	G	G											
2	G	G	P											
3	G	P	G											
4	G	P	P											
5	P	G	G											
6	P	G	P											
7	P	P	G											
8	P	P	P											

**Legend**

- Recommended Treatment
- Limited to localized areas
- Localized with approval from Area Manager

Condition State	Rut	IRI	WCX
1	G	G	G
2	G	G	P
3	G	P	G
4	G	P	P
5	P	G	G
6	P	G	P
7	P	P	G
8	P	P	P

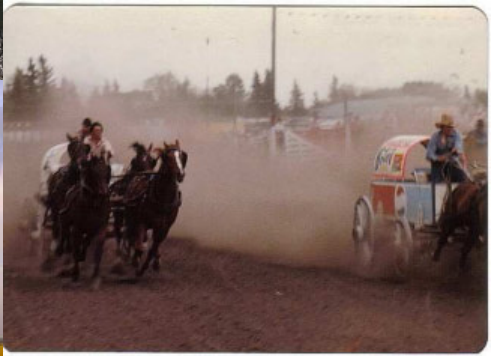
# 7. Performance Measures

---

---

- Used at all levels in Preservation
- Accountability
- Consistency
- Better demonstrate outcomes vs. funding





**Thank You!!!**

