

# NEW HAMPSHIRE UPDATE

Northeast Pavement Preservation Partnership Meeting

Enfield, CT

October 20-23, 2008



Eric Thibodeau – Pavement Management – Chief

# Presentation Outline

- 2008 PM Activities Update
- Challenges:
  - Political
  - Technical
- 2009 Goals





# 2008 PM Activities

- Resurfaced 280 miles
- I-93 Micro-Surfacing
  - 6.7 miles
- NH 153 Chip Seal:
  - 4.0 miles single chip seal
  - 1.0 mile fiber mat chip seal
- New Data Collection Vehicle
  - Completed Vendor Selection Process
  - Delivery June 2009



# 2008 PM Activities – Cont.

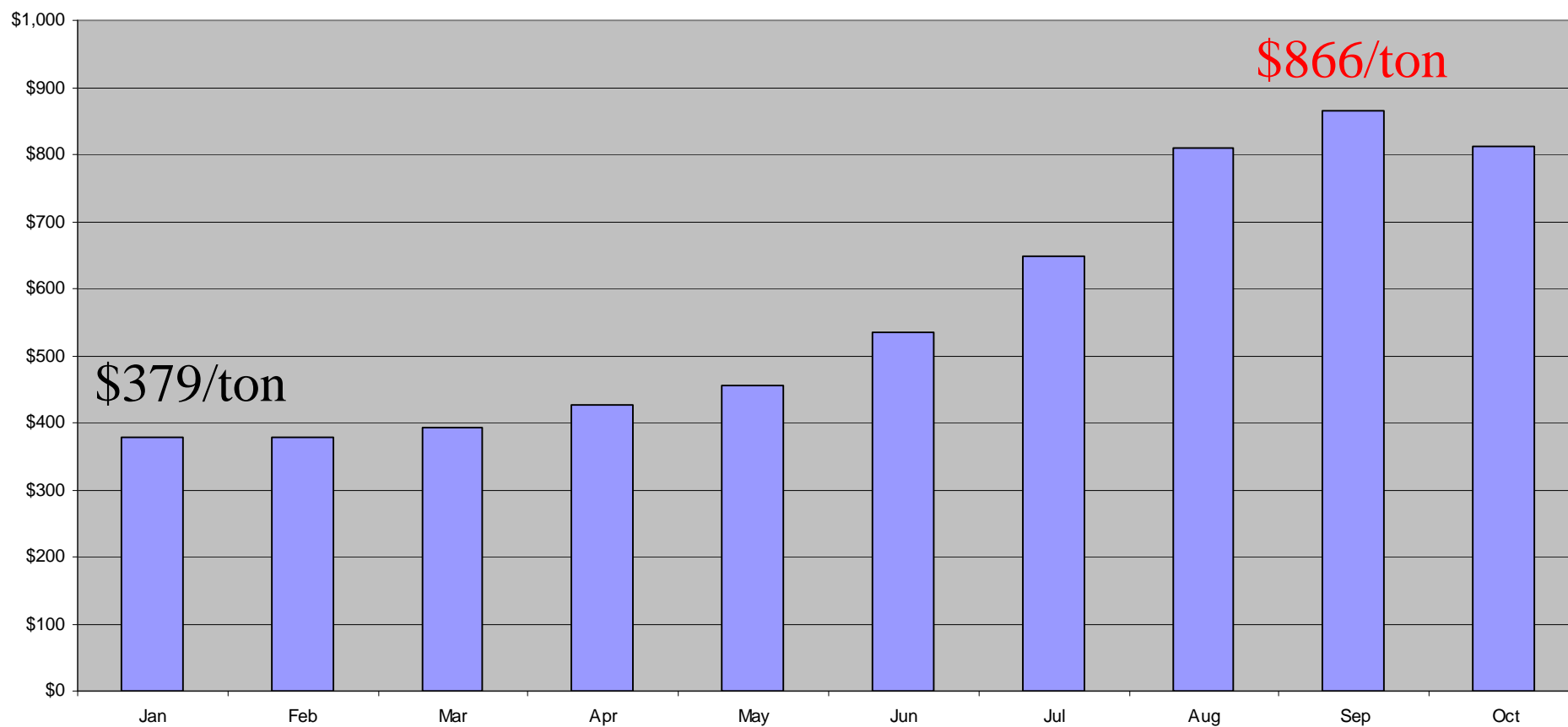
- PMS Upgrade
  - Upgraded reference system
  - Loading Historical Condition Data
  - Revising Analysis Parameters
  - Revising Treatment Costs
  - Target: Network Analysis by End of Year!

# Political Challenges

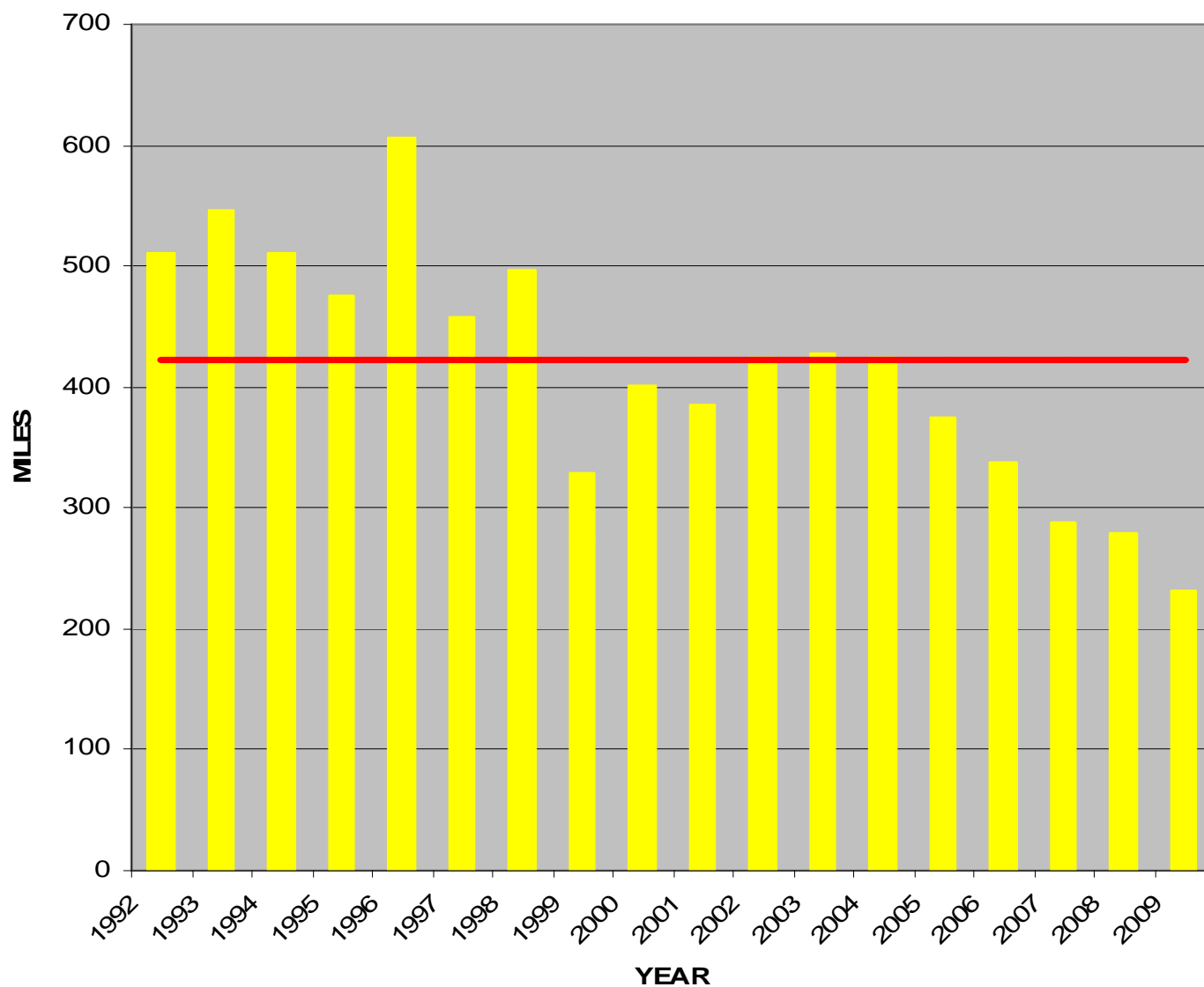
- Unprecedented Cost Increases
- Reduction In Treated Miles
- Network Condition Is Decreasing!
- Continue to Incorporate Preservation and Resist Worst First
- Build or Maintain?

# 2008 AC Pricing

2008 Average Monthly Cost of AC



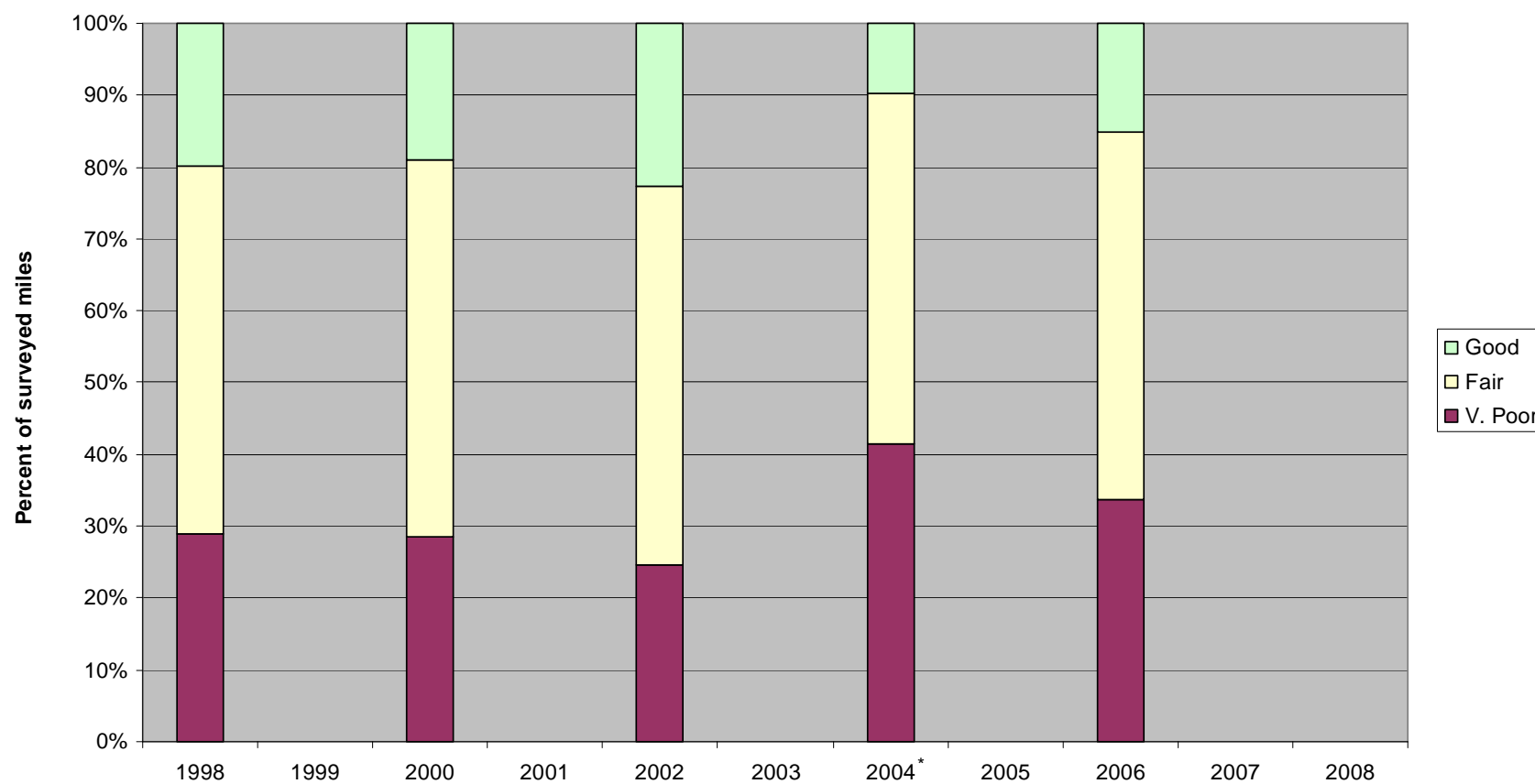
# 1992-2008 Resurfacing





# Network Condition

Non-NHS Numbered Routes Historical Road Condition - Ride Comfort Index (RCI)  
(2,567 Centerline Miles)

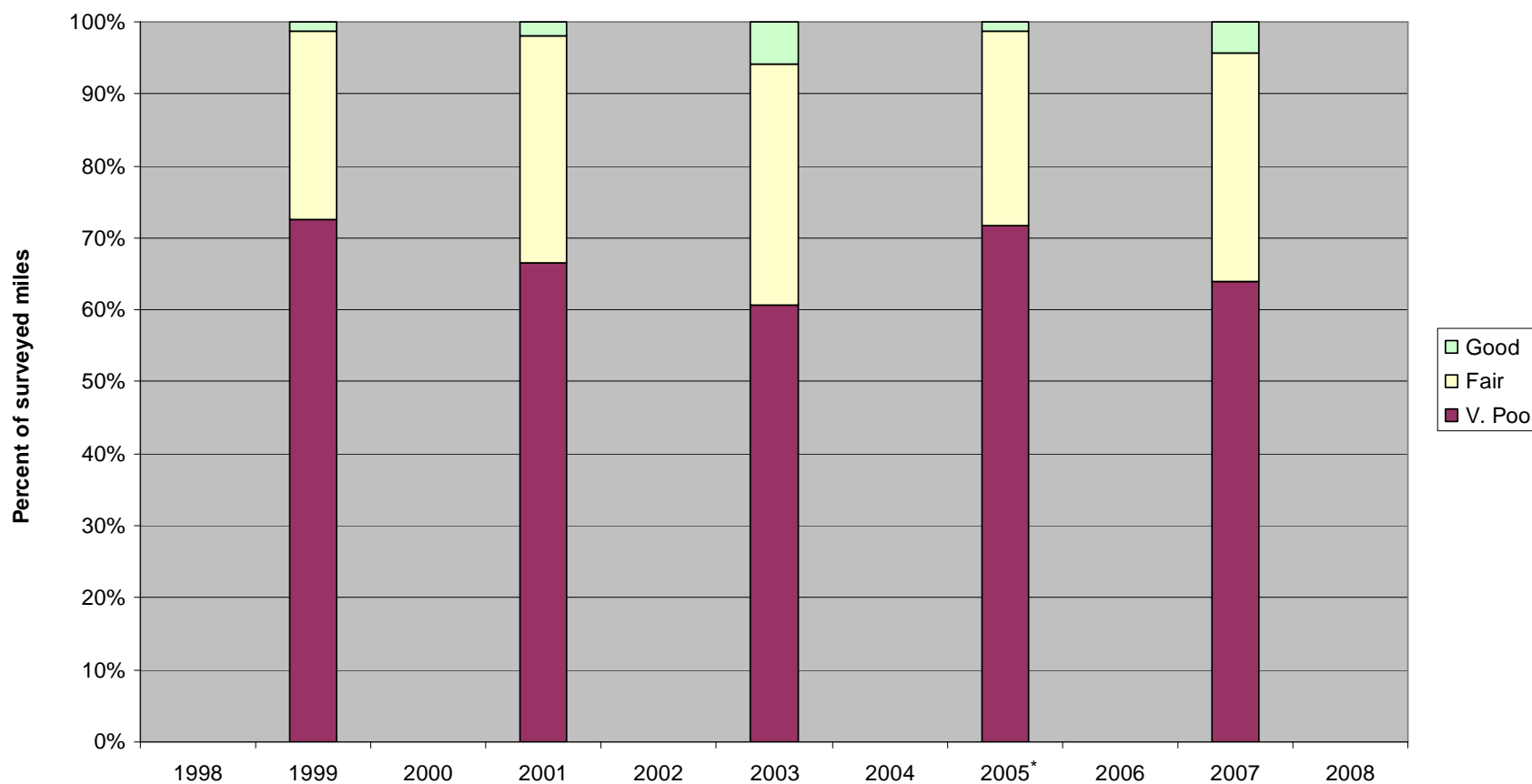


\* There are known problems with 2004 data



# Network Condition

Un-numbered Routes Historical Road Condition - Ride Comfort Index (RCI)  
(1,465 Centerline Miles)



\* There are known problems with 2005 data

# Possible Solutions

- Delay future projects to free up additional Federal dollars for resurfacing
- Continue Preservation Efforts
- Continue to Develop PMS





# Technical Challenges

- PM Treatments:
  - Surface Preparation
  - Crack Seal
  - Pavement Markings
  - Plow Damage
  - Treatment Acceptance
    - DOT
    - Public



## 2007 Micro-Surfacing Test Section



Loss of Pavement Markings From Plowing



## 2007 Micro-Surfacing Test Section



Plow Damage Along Edge Line

## 2007 Chip Seal Test Section

Loss of Pavement Markings From Plowing

Stone Loss



## 2008 I-93 Micro-Surfacing Project



Crack Seal Being “Pulled” By Micro Support Trucks



# 2008 I-93 Micro-Surfacing Project

Inlaid CL Pavement Marking





# 2009 Goals & Initiatives

- Secondary System Reclamation Program
  - New for 2009
  - Funded at \$3M per year
- Expand Chip Seal Program
  - Section for Each District
  - Target Sections which have been recently overlaid and are performing well  $\Rightarrow$  Minimize Surface Prep. \$\$
- Continue to Learn and Revise Chip Seal and Micro-Surfacing Specifications
- Continue to Monitor Test Sections and Publicize the Results

# 2009 Goals & Initiatives

- Integrate New Data Collection Vehicle
  - PMS  $\Rightarrow$  Calculate New Index Values
  - Entire DOT Network
- Continue to Upgrade PMS
- Increase Funding!





# THANK YOU!

Eric S. Thibodeau, P.E.

Phone: 603-271-1750

Email: [Ethibodeau@dot.state.nh.us](mailto:Ethibodeau@dot.state.nh.us)