

**New Mexico Department of Transportation
Transportation and Highway Operations**

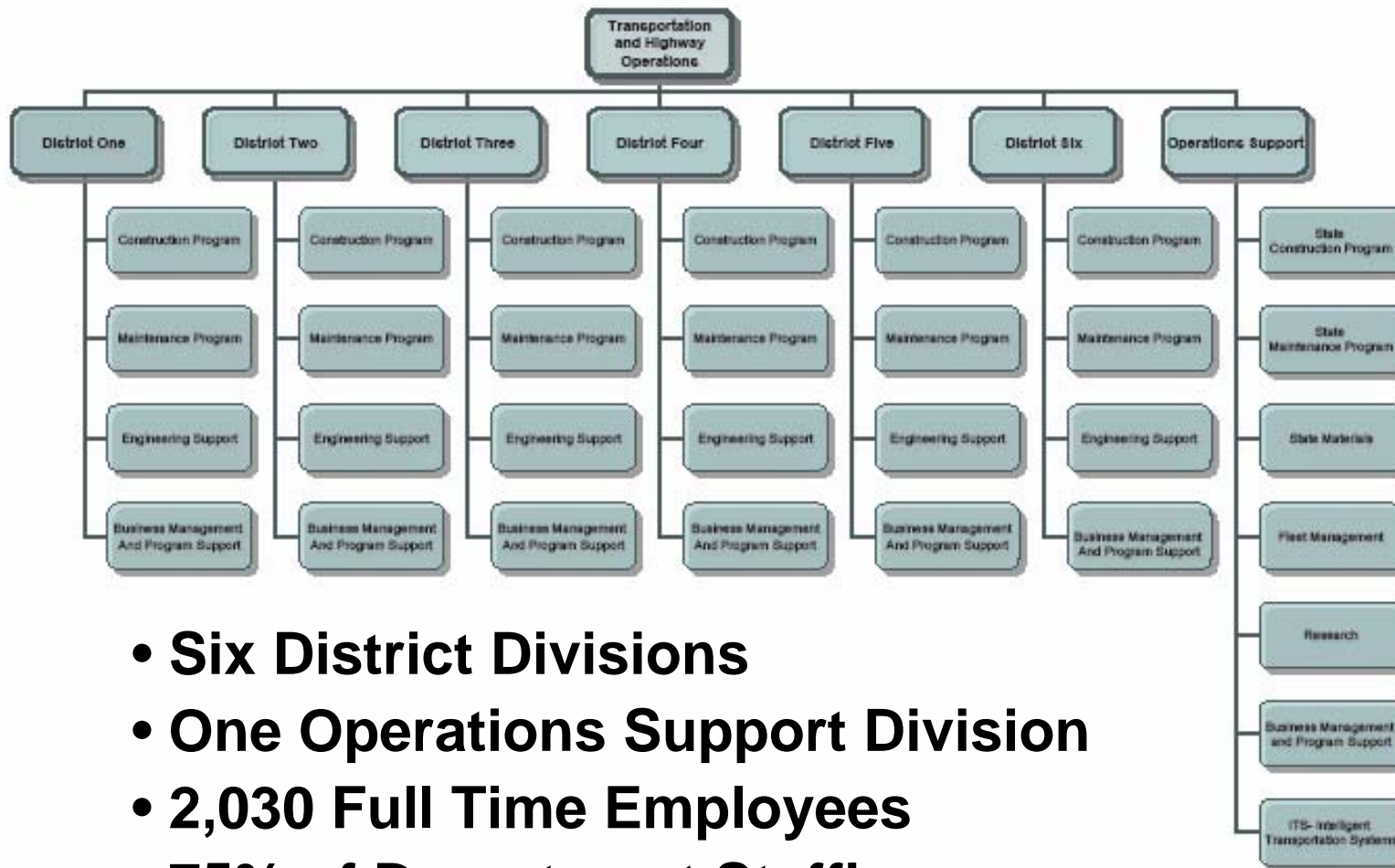


Overview of Operations & Condition of New Mexico's Highway System

January 10, 2008

20080109 CORRECTED
Condition of NM's Highways1.ppt

Transportation and Highway Operations Org Chart



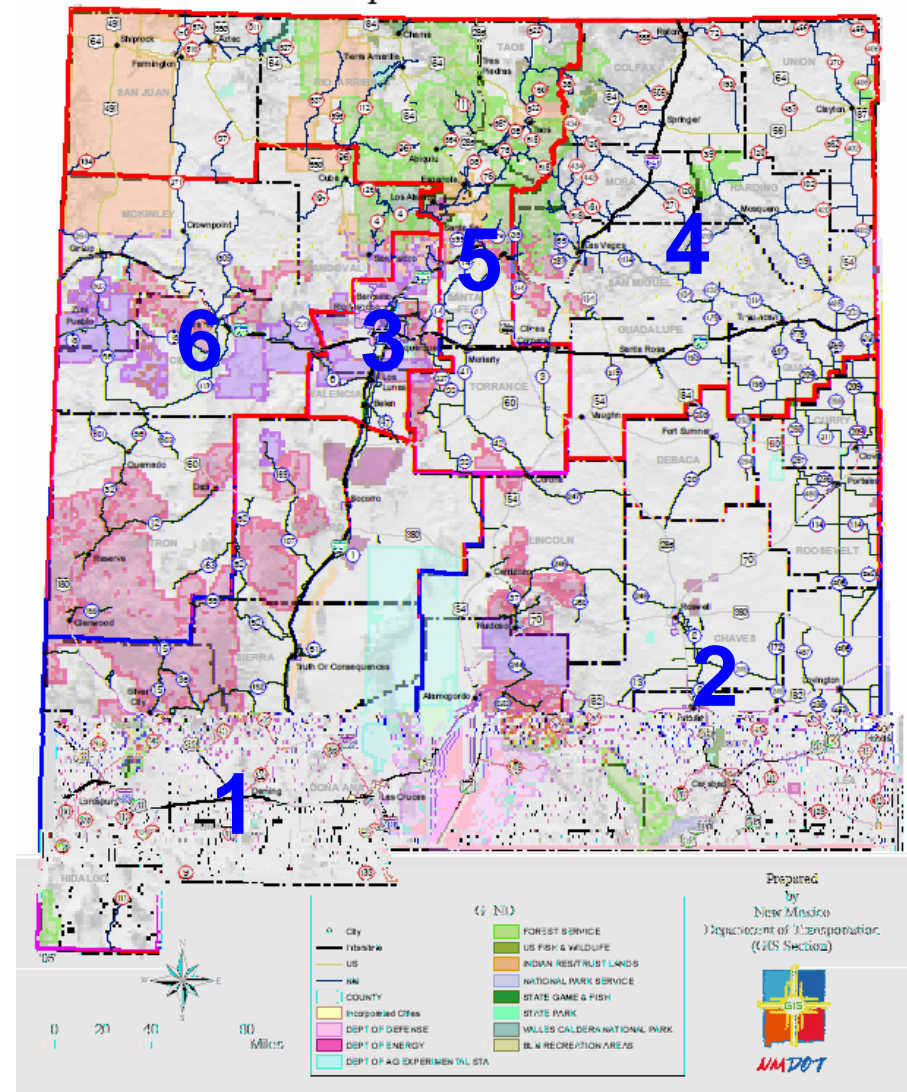
- **Six District Divisions**
- **One Operations Support Division**
- **2,030 Full Time Employees**
- **75% of Department Staffing**

Transportation Districts

District Offices

- D1 Deming
 - D2 Roswell
 - D3 Albuquerque
 - D4 Las Vegas
 - D5 Santa Fe
 - D6 Milan
- 12,525 centerline miles of highway maintained
 - 29,952 lane miles
 - 3,668 Classified Bridges

Transportation Districts



Three Primary Programs



- Construction Program
 - To administer highway construction contracts in compliance with State and Federal regulations
 - Staff 565 FTE, 34 Construction Crews, 29 Project Offices
 - \$650 million in active projects on average
- Maintenance Program
 - To maintain and preserve the Departments assets for the safe and efficient use by the public
 - Staff 940 FTE , 82 Maintenance Patrols, \$ 98 m/yr budget
- Business & Operations Support Program
 - To provide administrative functions in support of the Constr. And Maint. programs
 - Staff 525 FTE Yearly Operating Budget \$136 m/yr
- Total Budget = \$246 m/yr

Assessment of Highway Condition

1st Type - Pavement Surface Roughness



- Truck mounted Profilometer
- Electronic measurements
- Measures Pavement Roughness
- Yearly

Assessment of Highway Condition

2nd Type - Pavement Surface Distress



- (PSI) Pavement Serviceability Index
- Rating of 1 to 5, with 5 being the best

- Manual measurement
- Visual distresses
 - Cracking
 - Rutting
 - Shoving
 - Bleeding
 - Patching
- Roughness and Distress Data combined

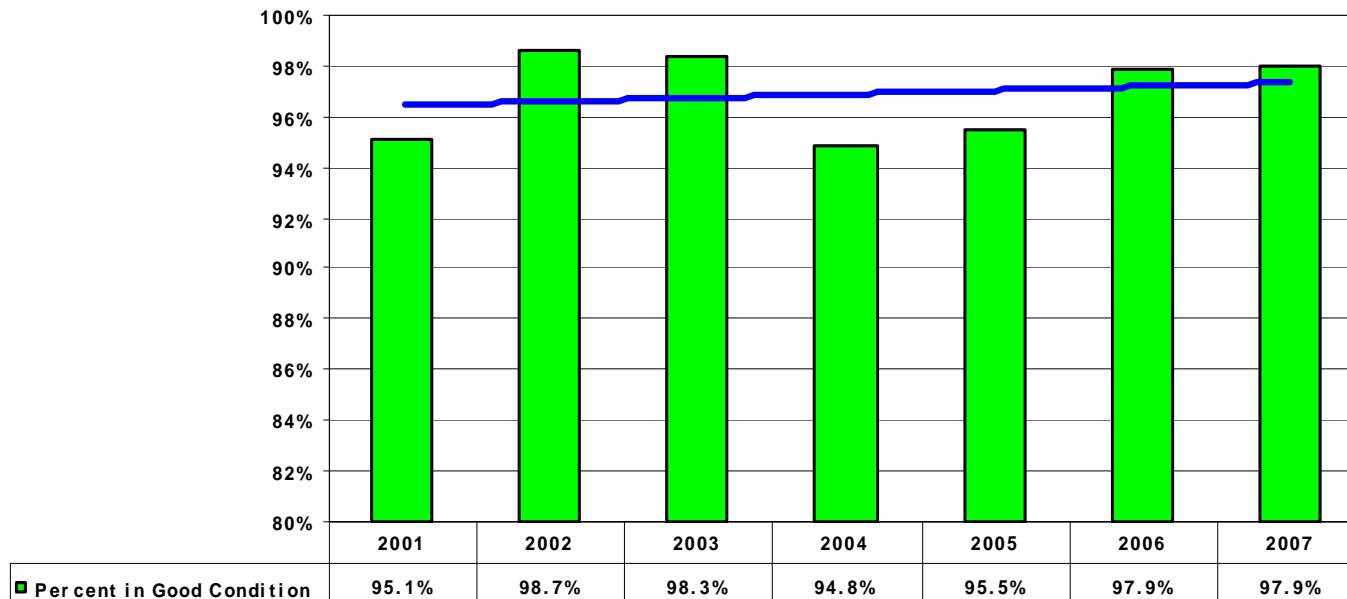
Interstate Highways

97.9 % in Good Condition

(PSI 3.0 or Greater)



Percent of New Mexico Interstate Highways in Good Condition
(Total of 4,089 Lane Miles of Interstate Highways in New Mexico)



FY06 → \$131 m in Interstate Projects
 FY07 → \$121m in Interstate Projects

Roughly 40% to 50% of
 constr dollars spent on 13%
 of system yearly

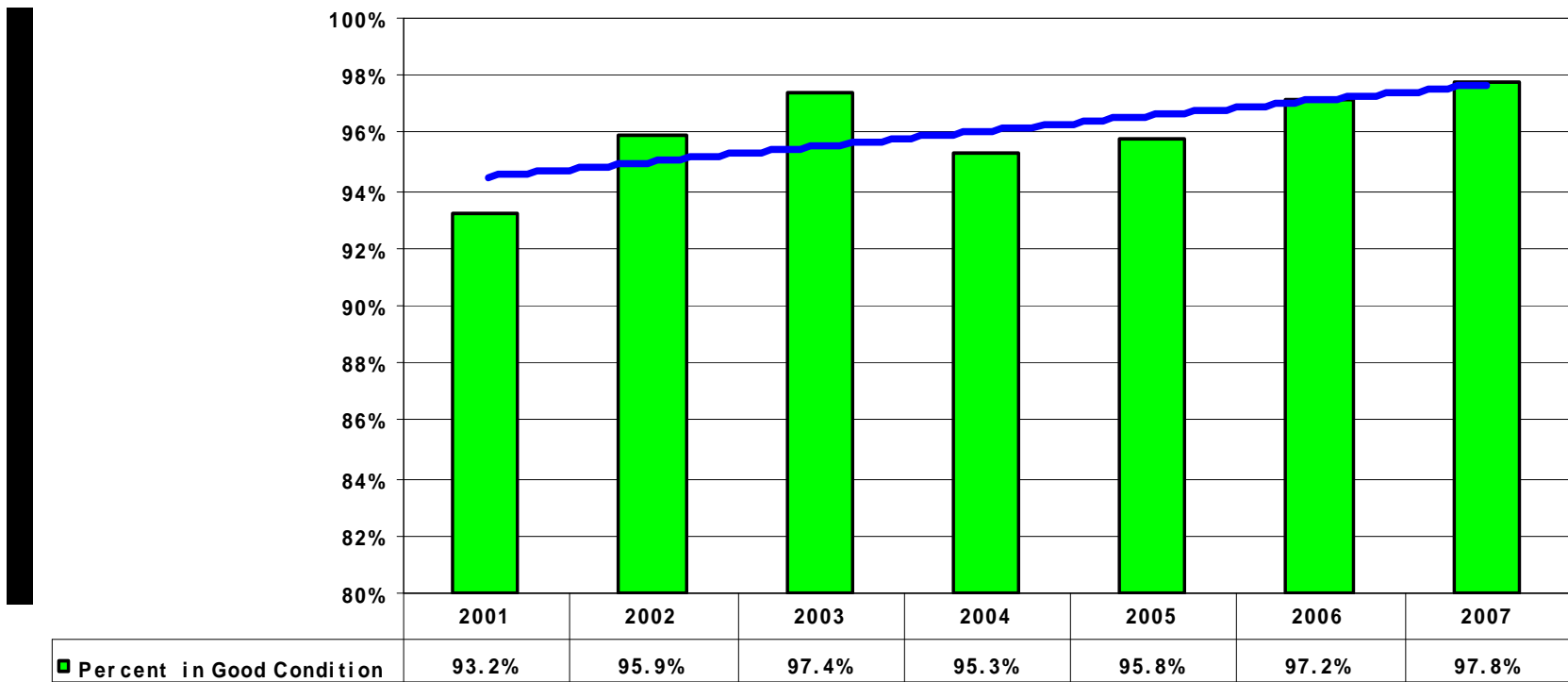
U.S. Highways

97.8 % in Good Condition

(PSI 2.5 or Greater)



Percent of NM Non-Interstate/NHS Highways in Good Condition
 (Total of 5,983 Paved Lane Miles of Non-Interstate/NHS Highways in New Mexico)



Grip has helped to improve the condition of U.S. designated routes

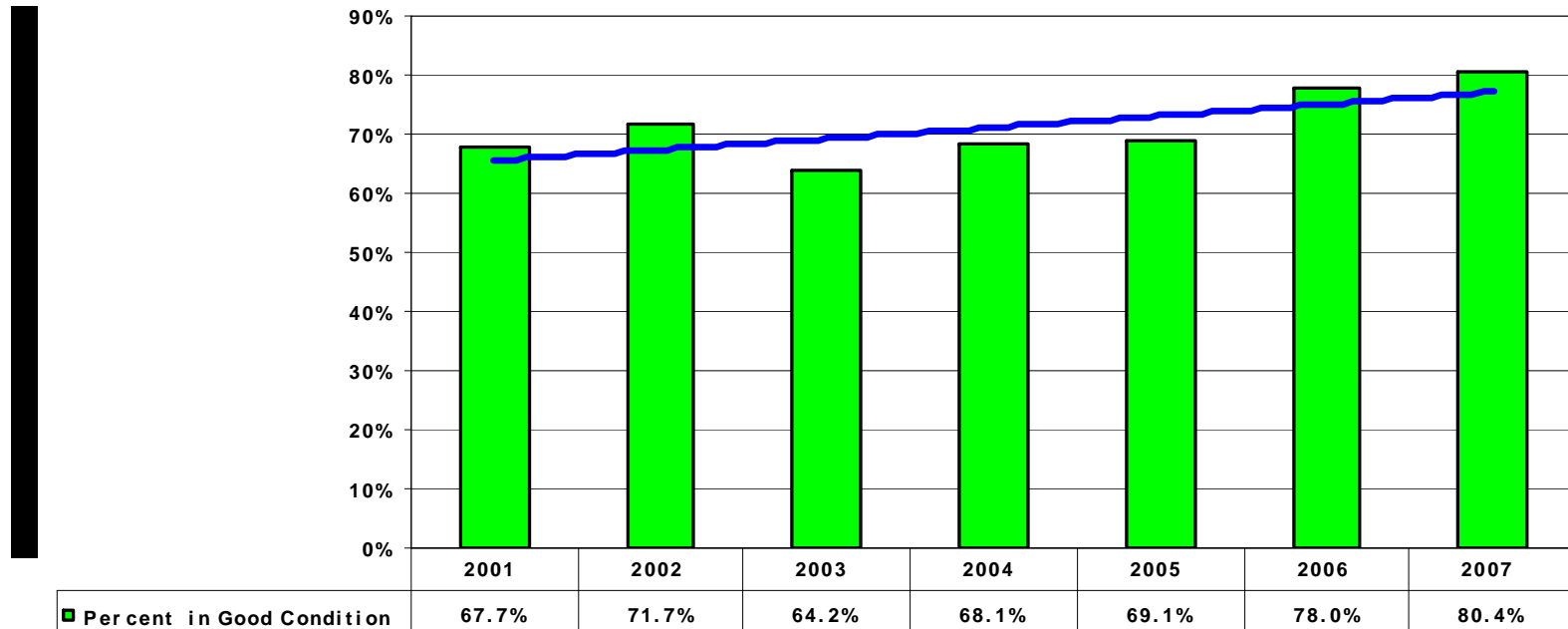
NM Highways

80.4 % in Good Condition

(PSI 2.5 or Greater)



Percent of New Mexico Non-NHS Highways in Good Condition
 (Total of 16,616 Paved Lane Miles of Non-NHS Highways in New Mexico)



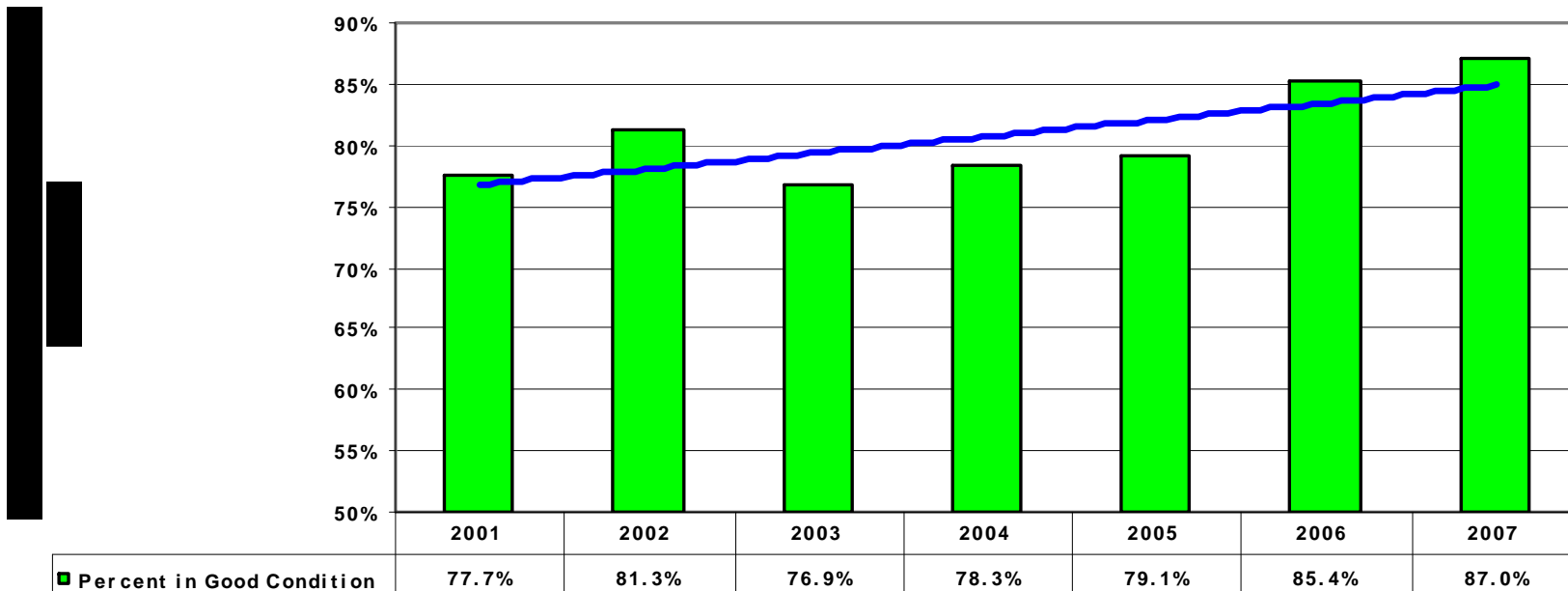
Grip has helped to improve the condition of NM designated routes

Condition of Overall System

87.0 % in Good Condition



Percent of New Mexico State Highway System in Good Condition
(Total of 26,688 Paved Lane Miles of Highways in New Mexico State Highway System)

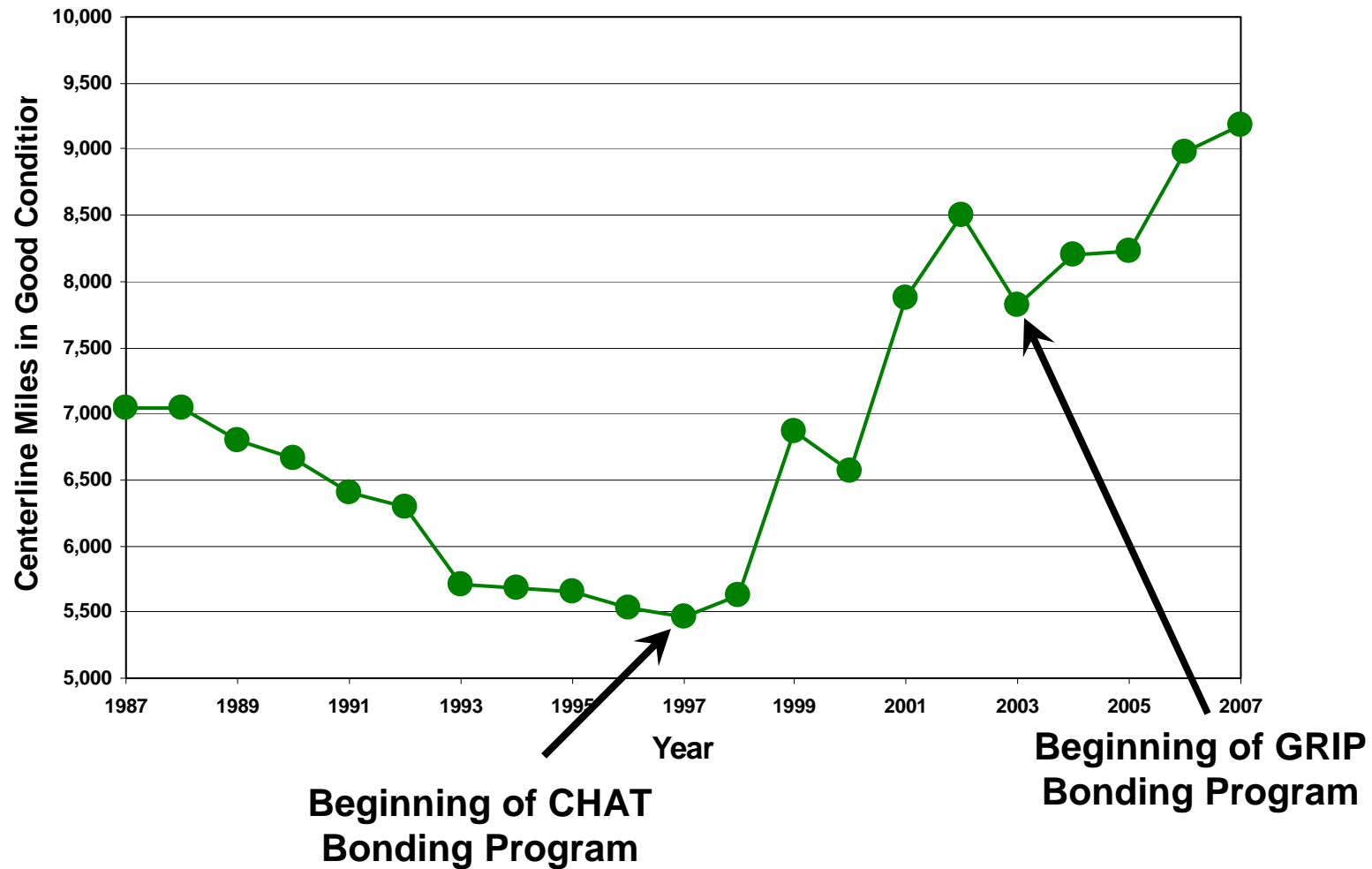


\$698 m Grip Investment in infrastructure since 2004

Investments in Infrastructure make Noticeable Improvements in Hyw Condition



New Mexico State Highway System Condition History

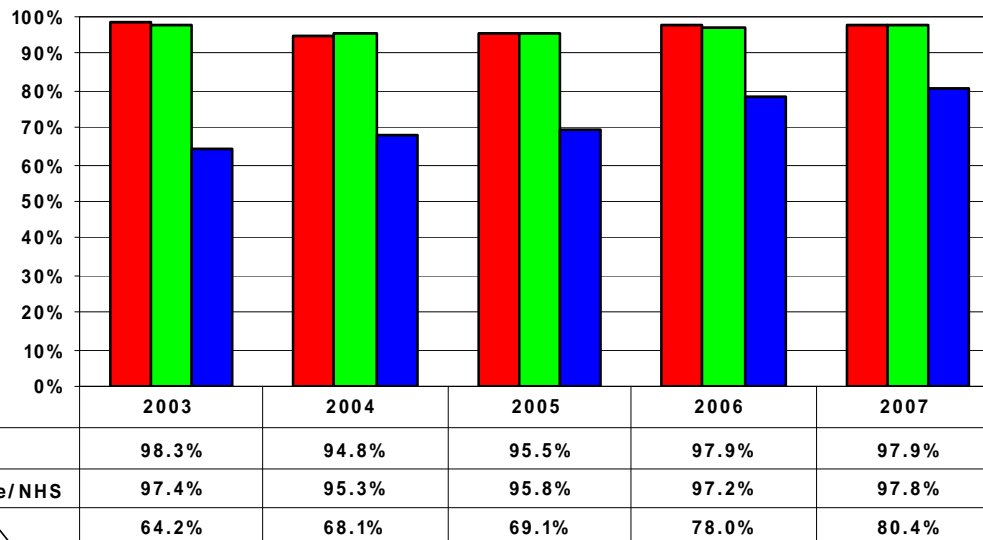


Highway Deficiencies Still Exist

\$1.2 Billion to \$2.3 Billion Need



CONDITION OF STATE HIGHWAY SYSTEM



US Routes

NM Routes

- Interstates – 4089 mi total
 - 84 mi deficient
 - Estimated cost to repair \$150 to \$450 million
- NHS – 5983 mi total
 - 130 mi deficient
 - Estimated Cost to repair \$117 to \$380 million
- NM Routes – 16,612 mi total
 - 3,254 mi deficient
 - Estimated cost to repair \$976 to \$1,500 million
- **3,468 deficient miles total**
 - **\$1.2 Billion to \$2.3 Billion Need**