



SEPPP

Atlanta, Georgia

May 6th through May 8th
2008





Slurry Systems Best Practices & Quality Control

A Guide To Quality Construction

BY W. Pierre Peltier
SemMaterials L.P.
Southlake, Texas





Slurry Systems Applications

- City Streets
- Collector and Arterial Streets
- State Highways
- Interstate Highways
- Parking lots
- Airports

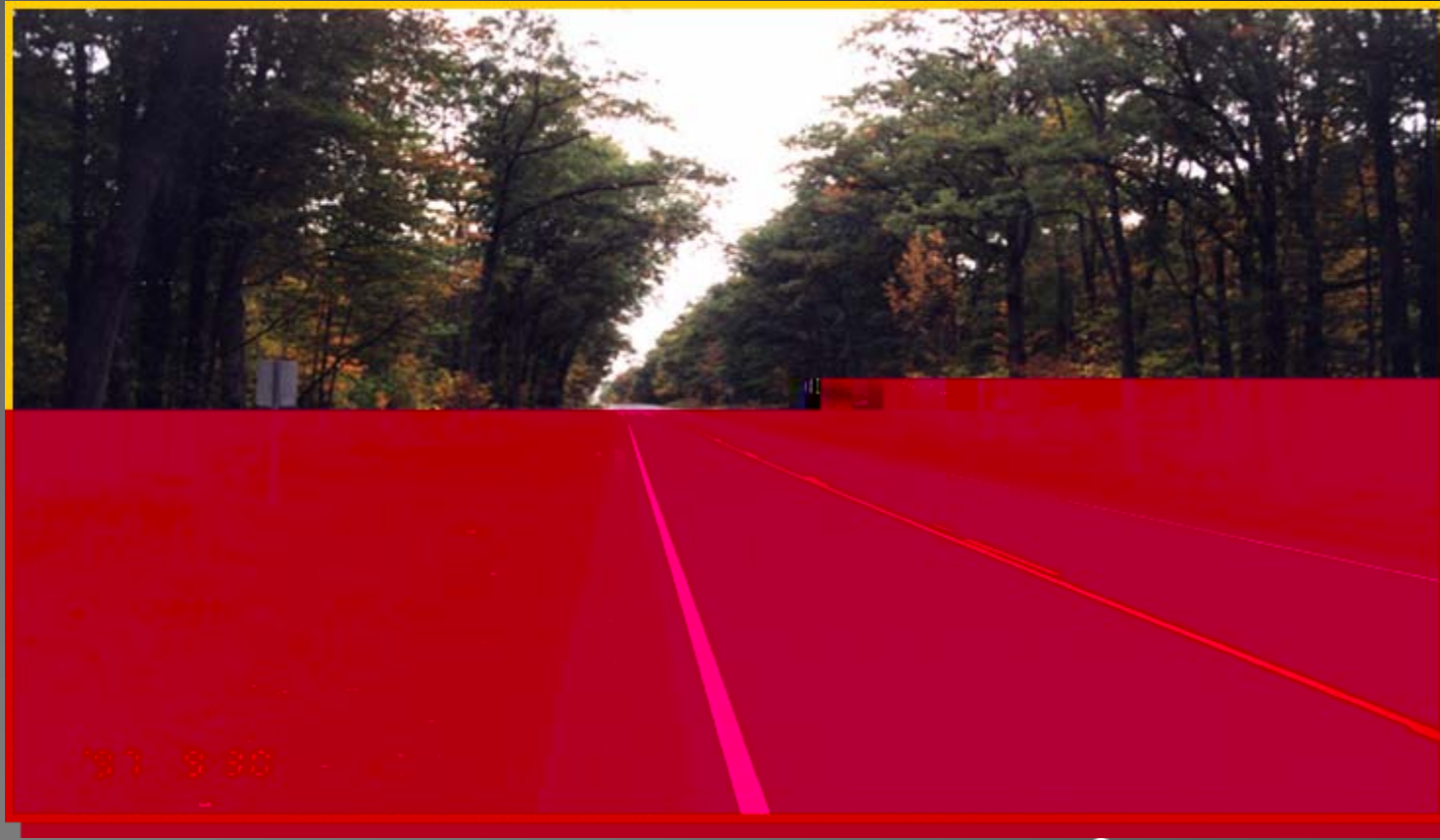


Four Lane Interstate





Two Lane Highways





Residential Inter City





Airports





Quality is Based on

"Attitude"





Quality is

Doing a good job





Expectations

- New Surface
- Skid resistant surface with an aggregate texture
- Fills surface voids
- Traffic ready within a few hours
- Consistent surface color
- Minimal raveling or shedding of aggregate
- No bleeding or flushing
- Long lasting application 5 to 10 years



Buyer- Agency

Proper Job Selection -
Deciding what you want and where you want it, making sure the end product will meet your expectations. Be sure your expectations are achievable.





Appropriate Specifications

Make sure the specifications describe and match the job

Make sure the specifications describe and meet your expectations as a buyer.





Specifications

Use ISSA Specifications and other local specifications currently being used in your specific area as a guide when you are preparing specifications for your project





WHAT THEY ARE

Specifications state the buyers expectations with respect to the materials, equipment, rate of application, workmanship, traffic control, tolerance, etc.





Surface Selection

- Existing surface conditions
- Traffic conditions – Truck traffic
- Surface texture
- Friction resistance
- Appearance
- Performance – how long will it last
- Restrictions for time and temperature



Mix Design

- Design to be current
- Completed with proposed aggregate
- Completed with proposed emulsion
- Verify design for project traffic count
- Verify for the anticipated temperatures during the project application



QC-QA

Specify Quality Materials
and do the testing to assure compliance with
the specifications

and the Mix Design.





Emulsion QA - QC

- Specify Type of Emulsion and setting characteristics
- Test for residue, penetration, sieve and softening point
- Certificate of compliance with each load
- Check emulsion temperature



Aggregate QA - QC

- Specify gradation and type based on desired finished surface
- Check for aggregate consistency
- Test aggregate per specification
- Require aggregate certification
- Watch for contamination





Surface Preparation

- Crack Sealing
- Asphalt Patching
- Remove and spray vegetation
- Clean the surface, Sweep - Wash
- Oil spot removal - treatments
- Pavement marking removal – Tape – paint
- Cover the utilities
- Use pavement markers as required





Crew

- Good attitude - Team effort
- Trained and knowledgeable
- Applies Slurry Systems according to design
- Knows project specifications
- QA/QC - controls materials
- Good workmanship





Monitor the Project





Field Inspection

- Knowledgeable Inspector on site
- Knows the Project Specifications
- Knows desired results-expectations
- Authority to make field decisions
- Keep open line of communication
- Keep accurate records and reports



Equipment

- Good mechanical condition
- Keep the pug-mills and gates clean
- Current calibrations
- Metering devices in working order
- Spreader box, clean, proper type, and in good working condition



IN THE BEGINNING





MODERN DAY EQUIPMENT





COMMUNICATION





Why do Surface Treatments Fail?

- ◆ Material incompatibility
- ◆ Improper pavement preparation
- ◆ Control of materials during application
- ◆ Traffic control
- ◆ Working too late in the season
- ◆ Improper road selection





Successful Construction



26 12:33 PM





Moving Forward

Pavement Preservation in the future





MOTIVATION And Passion for the Future

Passion

- More Sustainable
- Strengthens over time
- Better perspective
- Strategic & Visionary
- Care about Relationships
- Highest Quality
- Most Fun

Adrenaline

- Gets you through the tough spots
- Weakens over time
- Lose perspective
- Tactical
- One Win
- Damages relationships
- Care and good, not great!





Learn from the mistakes
of others -- you won't live
long enough to make them
all yourself. . .



