

Utah Department of Transportation
Systems Planning and Programming
Division of Asset Management

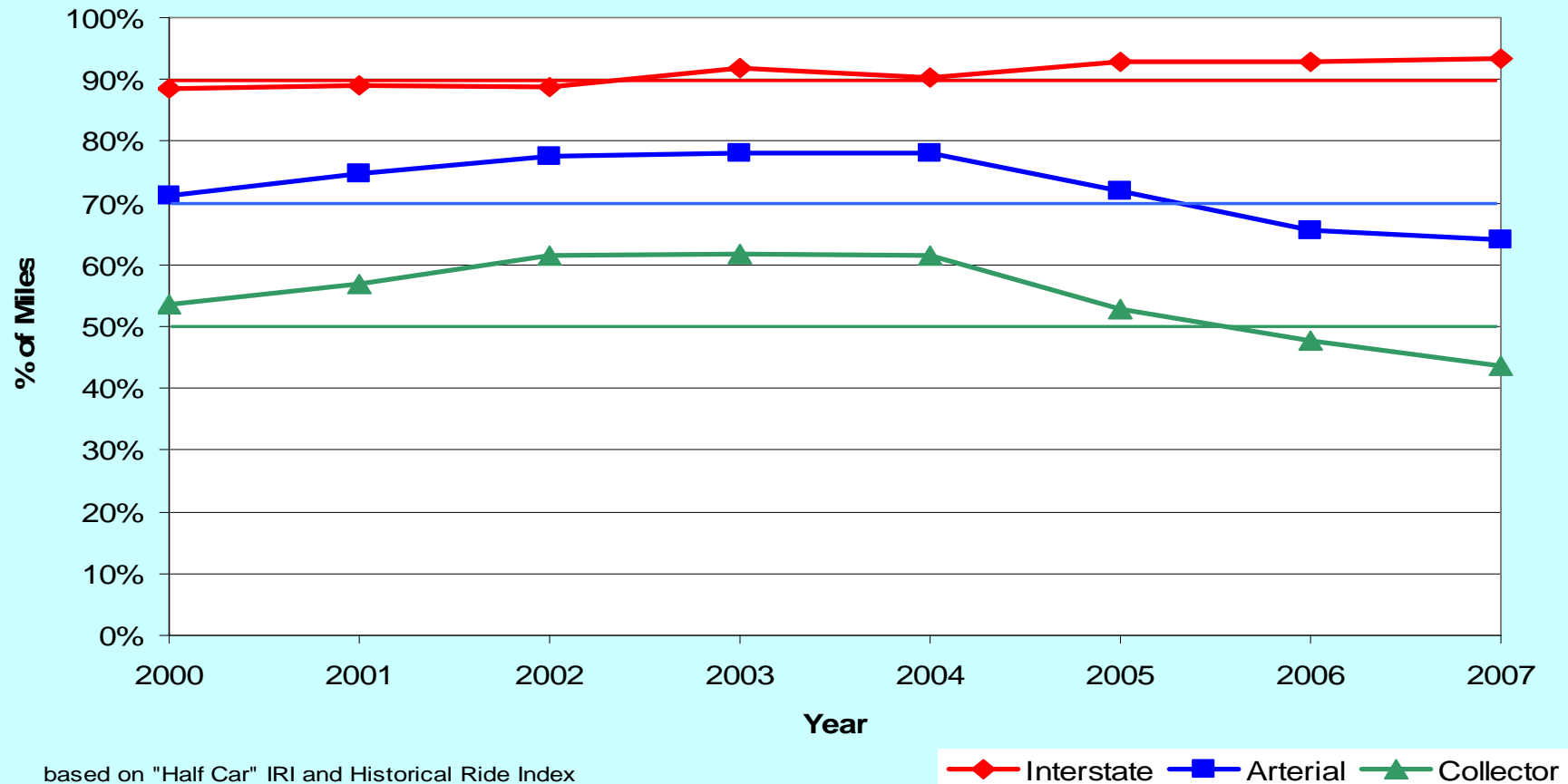
"taking care of what we have"

Rocky Mt. Pavement Preservation Partnership
Denver, Colorado - April 29th & 30th 2008



Pavement System Health

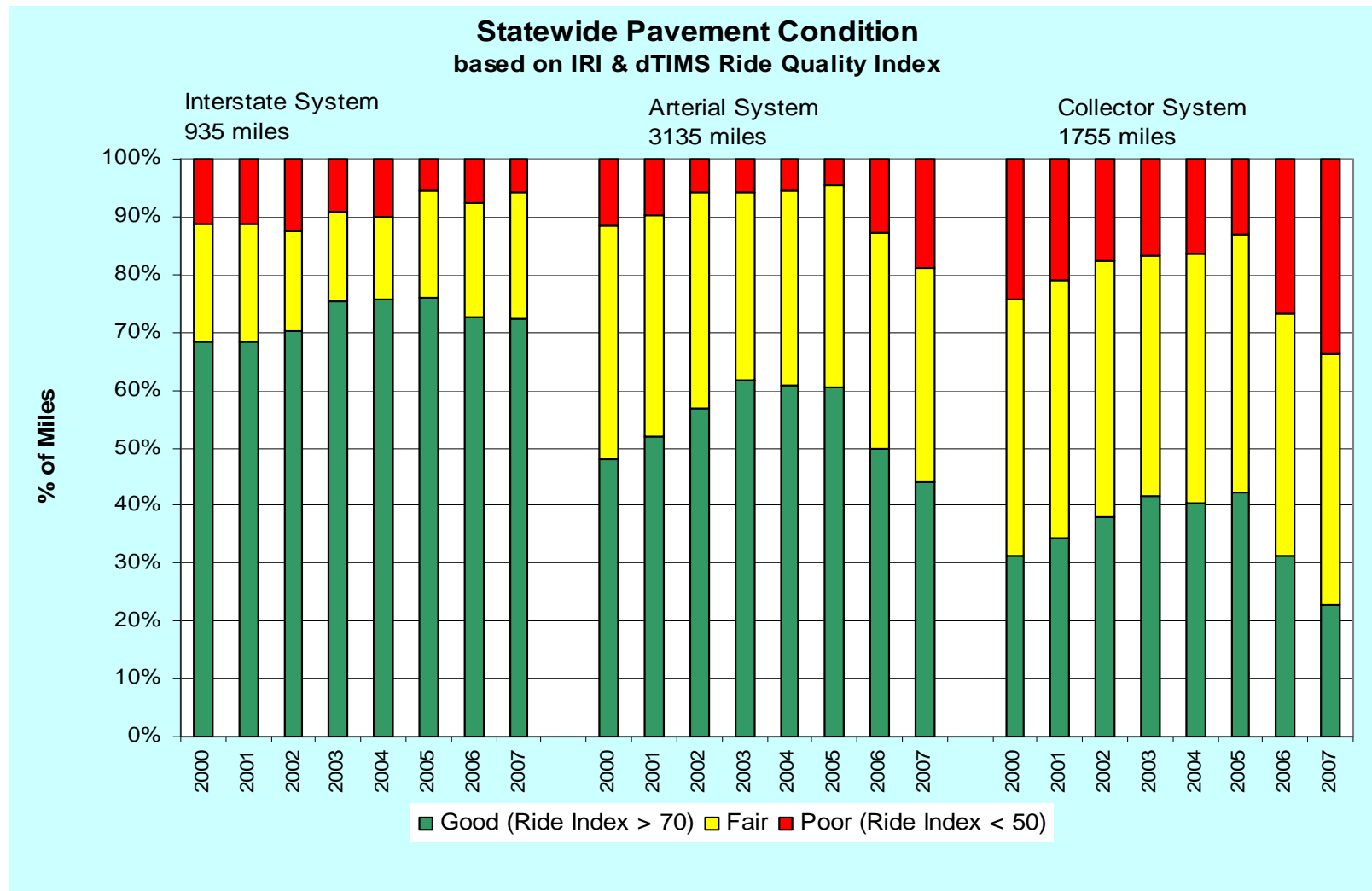
Statewide Pavement Condition
% of miles Fair or Better



Systems Planning & Programming

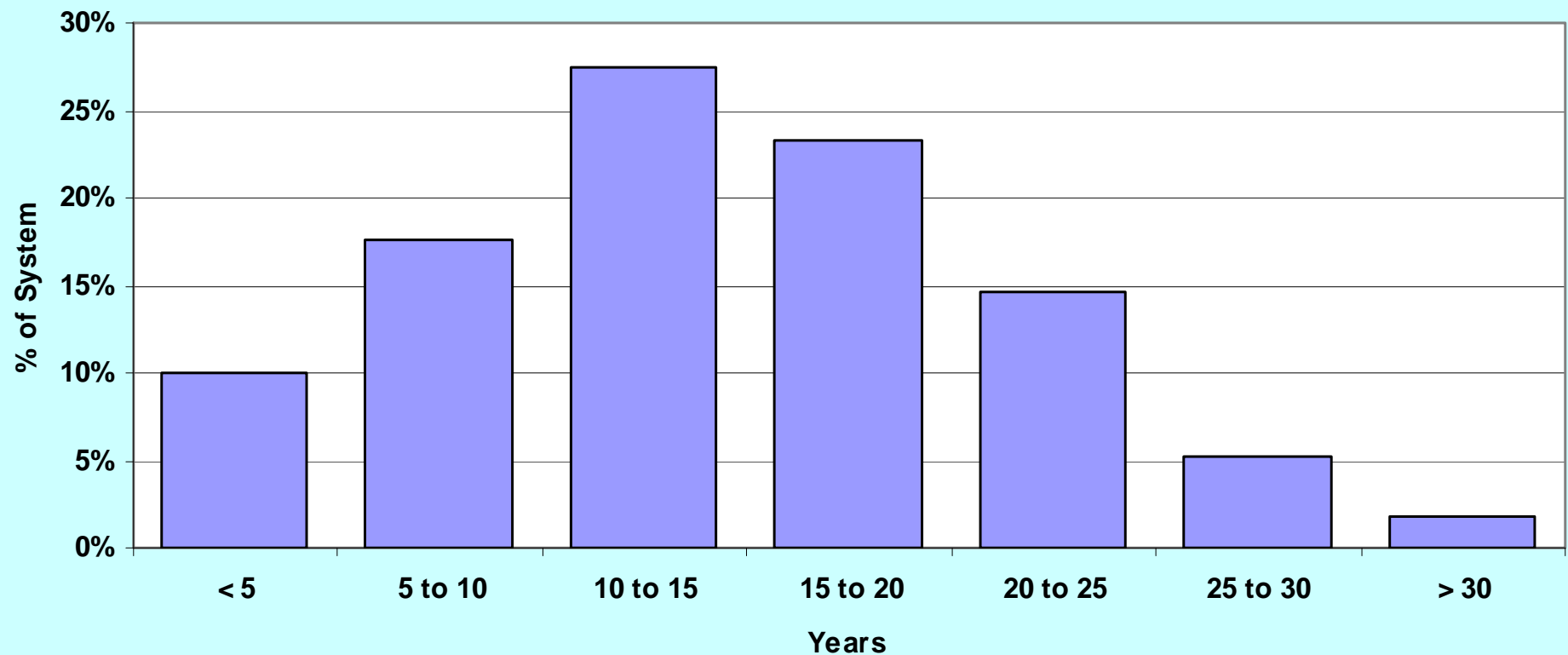


Historic Ride



Remaining Service Life

Remaining Service Life
Statewide - 5,840 miles



Systems Planning & Programming



Effect of Inflation on Pavement Funding

YEAR	2004	2005	2006	2007	2008	2009	2010	2011	2012
Construction Cost Increase		22%	22%	22%	10%	10%	10%	10%	10%
Pavement Cost (Millions)	\$151.4	\$185	\$225	\$275	\$302	\$333	\$366	\$403	\$443
Construction Cost Increase		22%	22%	22%	4%	4%	4%	4%	4%
Pavement Cost (Millions)	\$151.4	\$185	\$225	\$275	\$286	\$297	\$309	\$322	\$334
Construction Cost Increase		22%	22%	22%	10%	9%	7%	7%	7%
Pavement Cost (Millions)	\$151.4	\$185	\$225	\$275	\$302	\$330	\$353	\$377	\$404
Current Program				\$161	\$184	\$189	\$194	\$200	?

Value of Our Pavement Asset

- **\$12.3 Billion of Pavement Replacement Value (\$800,000/ lane mile – 15,400 lane miles)**
- **Proposed \$200 M for Pavement Preservation & Rehabilitation in 2008, 1.6% of Asset Value**

State Highway System Miles

