

# **WHY DO WE NEED PAVEMENT PRESERVATION PARTNERSHIPS?**

**Stephen R. Mueller, P.E.  
Pavement and Materials Engineer  
Federal Highway Administration  
[Steve.Mueller@dot.gov](mailto:Steve.Mueller@dot.gov)**

# Without Pavement, We Would Be Stuck in the Mud!



Washington-Richmond road, 1919  
NMAH, Archives Center, API Collection

# Less Than 100 Years Ago...



# We've Come a Long Way ...



# OUR SOCIETY DEPENDS ON OUR INFRASTRUCTURE FOR THE MOVEMENT OF BOTH PEOPLE AND GOODS!

*SOCIAL INTERACTIONS*

*ECONOMIC TRANSACTIONS*

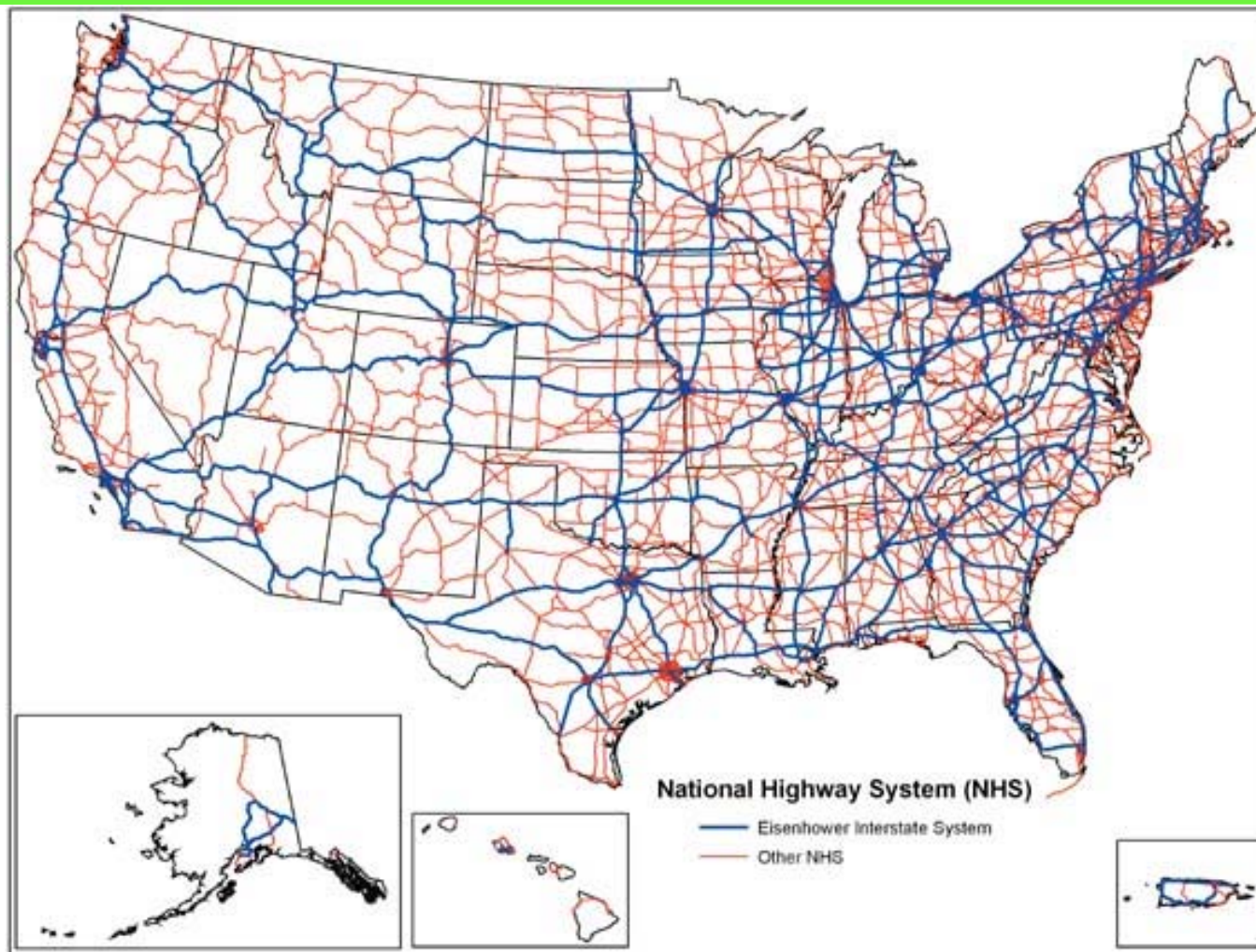
**INFRASTRUCTURE**

Roads, Bridges, Airports, Water Systems, Wastewater Systems,  
Gas, Electric, Telephones, Waterways, Coastal Facilities, Parks, Etc.

# **PRESENTATION OUTLINE**

- **INTERESTING DEMOGRAPHICS**
- **REGIONAL PAVEMENT PRESERVATION PARTNERSHIPS**
  - **THE NEEDS FOR PARTNERSHIPS**
  - **REGIONAL NEEDS**
  - **ADMINISTRATIVE ISSUES**
  - **AASHTO INVOLVEMENT**
  - **FHWA INVOLVEMENT**

# 4 Million Miles of Roads



# Statistics We Should Know:

Federal = 3%

State = 20%

Local = 77%

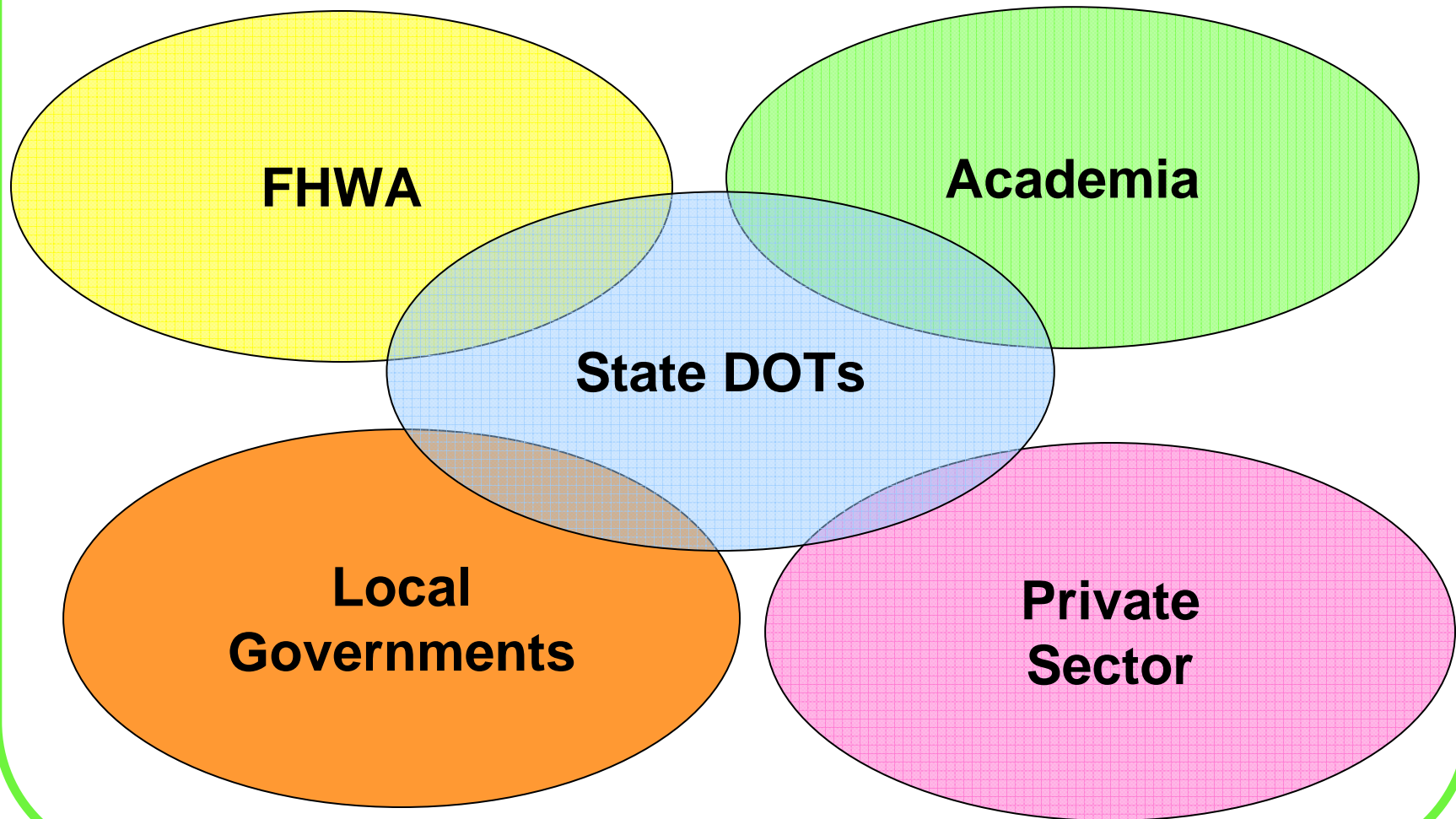
2/3 are Paved (1/3 Unpaved)

94% have an Asphalt Surface

# The Stakes are LARGE!

- **\$2 Trillion Investment in Transportation Infrastructure.**
- **There are MANY owners.**
- **There is shared expertise.**
- **Our Country DEPENDS on Our Success!!!**

# Partnerships Are Needed!



# PARTNERSHIPS ARE NEEDED



## MANY MORE!!!

# National.... Or Regional?

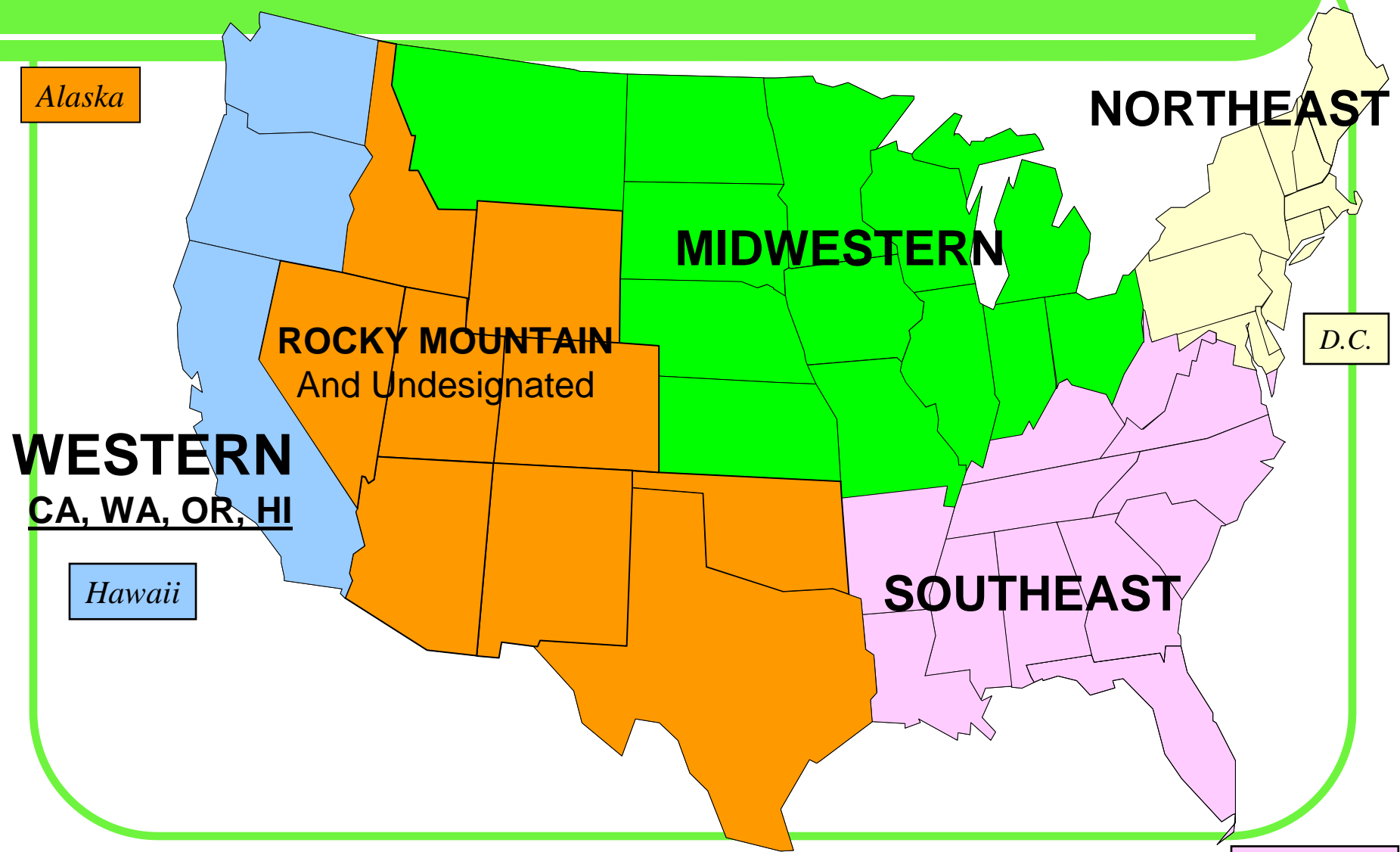
- **Frequency of Communications?**
- **Personal Acquaintances?**
- **Use of Applications?**
- **Technical Issues with Applications?**
- **Trust?**

# Administrative Issues

- **1 FHWA**
- **52 State DOTs (including DC and PR)**
- **3,034 County governments;**
- **35,933 Municipal, Town and Township governments.**
- **4,140 Colleges and Universities**
- **\_\_\_\_\_ contractors/industry reps.**

**UNITED WE STAND....**

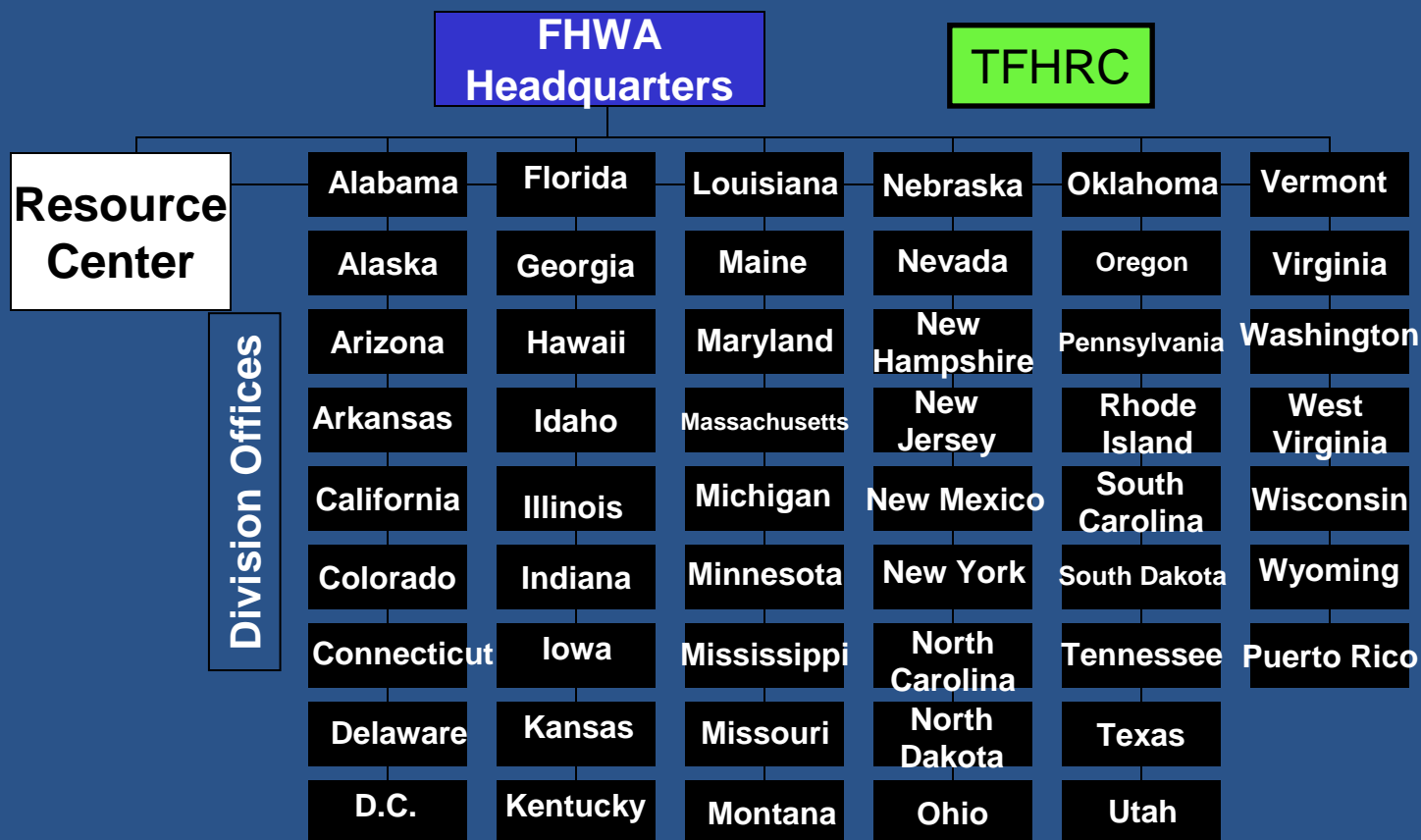
# Pavement Preservation Partnerships



# AASHTO and FHWA Involvement

- **Foundation of the Partnerships**
  - **National Leadership and Coordination**
  - **Provision of Resources**
  - **AASHTO Standing Committee on Highways, Subcommittee on Maintenance Resolutions began the process.**
- **Regional Responsibilities and Direction is up to the Partners!**

# FHWA Organization

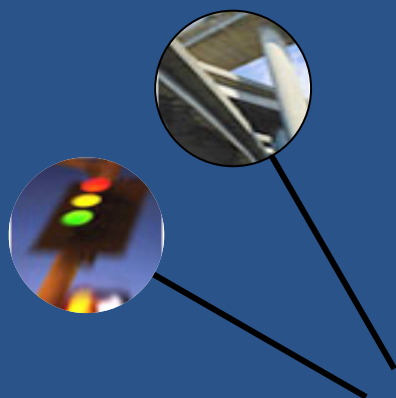


# Vision → Mission



**“Our Agency and our transportation system are the best in the world.”**

**“Improve Mobility on our Nation’s Highways through National Leadership, Innovation, and Program Delivery.”**



# FHWA's "3 E's"

## ● **ENGINEERING**

- Use Good Engineering Design and a Preservation Philosophy to Assure Long-Life Pavements.

## ● **ECONOMICS**

- Use Life-Cycle Cost Analysis for Project Selection.

## ● **ENVIRONMENT**

- Consider Recycling First
- Be Good Stewards of the Environment

# **PRESENTATION OUTLINE**

- **INTERESTING DEMOGRAPHICS**
- **REGIONAL PAVEMENT PRESERVATION PARTNERSHIPS**
  - **REGIONAL NEEDS**
  - **ADMINISTRATIVE ISSUES**
  - **AASHTO INVOLVEMENT**
  - **FHWA INVOLVEMENT**

# THANK YOU!



## Thank You!



**Steve Mueller**

**FHWA Pavement and Materials Engineer**

**(720) 963-3213**

**Steve.Mueller@dot.gov**